



Green & Healthy Homes Initiative®

# EPA Thriving Communities Program

Feb 16, 2024 10:00 – 11:00 AM ET

---

***Vision: Advancing the social determinants of health and racial equity through healthy housing.***

## **Mission**

GHHI is dedicated to addressing the social determinants of health and the advancement of racial and health equity through the creation of healthy, safe and energy efficient homes. By delivering a standard of excellence in its work, GHHI aims to eradicate the negative health impacts of unhealthy housing and unjust policies for children, seniors and families to ensure better health, economic and social outcomes in historically disinvested communities – with an emphasis on communities of color.



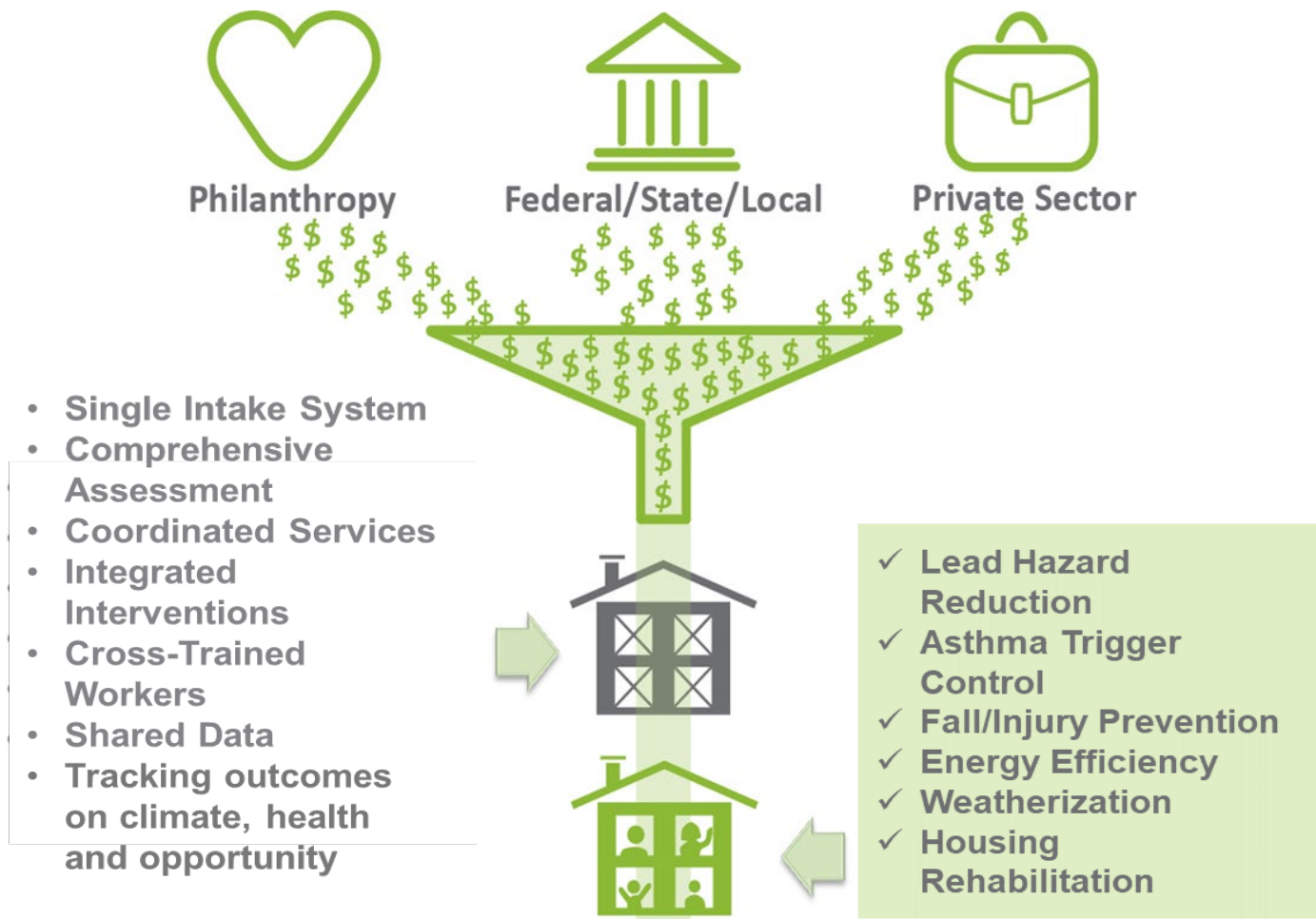
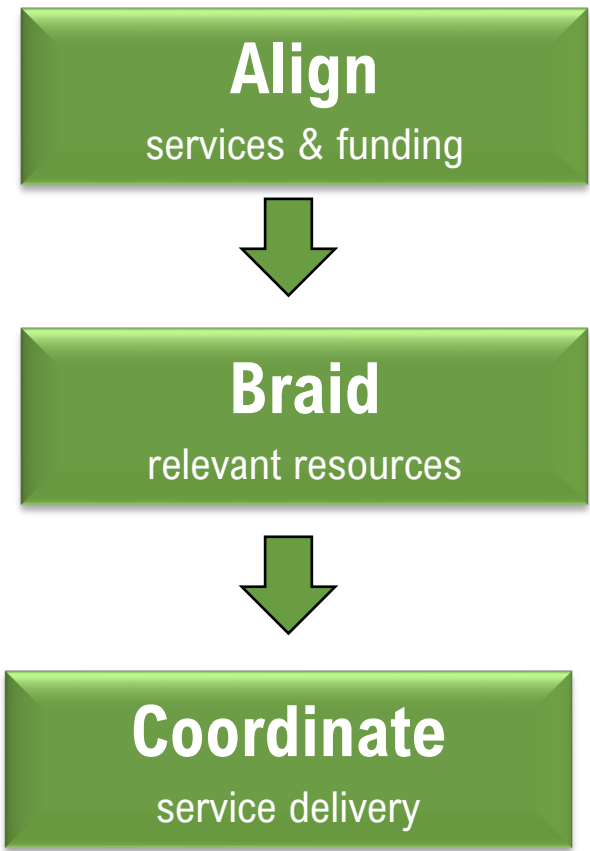


## Accomplishments

-  \$400 million raised and 49 pieces of legislation passed to support health and equity in housing
-  Architect of the most health protective lead laws in the nation, leading to a 99% reduction in lead poisoning in Maryland, which garnered \$44.5B in lifetime earnings from lead poisoning prevention. Policies have been replicated around the country
-  Designed largest hospital community benefit investment in healthy housing (\$50M in PA)
-  Leading healthy housing convener both at the local (over 75 partnering jurisdictions), state and national levels
-  Field leader in alignment of housing with other sectors such as healthcare, energy, and education
-  National leader in innovative financing models for healthy homes including designing the first Pay for Success model with Medicaid paying for outcomes
-  One of the only healthy homes programs contracted by a Medicaid MCO and ACO. Supports other contracted programs



# The GHHI Model: Aligning Resources to Advance Holistic Retrofits



---

## The Whole-House Strategy: Assessors, Educators, and Crews Address Housing Issues Holistically

- Asthma Trigger Reduction and Improved IAQ
- Elimination of Lead Hazards
- Energy Efficiency and Weatherization
- Integrated Pest Management
- Mold and moisture remediation
- Injury prevention measures including carbon monoxide and smoke detectors; Fall reduction measures, senior accessibility
- Radon, asbestos, and home-based env. hazard remediation

### Other Jurisdictions Implementing Whole House Models

- States of New Jersey and Pennsylvania, City of Milwaukee



---

## EPA Environmental Justice Approach

- Provide resources as soon as possible for on the ground activities to benefit communities.
- Meet communities at their needs and where they are in their journey.
- Prove that investing in communities are the best investments to solve the toughest problems in places with the biggest challenges.
- Achieve lasting, meaningful change on the ground.
- Be the bottom-up to all the other top-downs!

---

## EPA Thriving Communities Program

- Each EPA Region (D.C. is in Region 3 with Delaware, Maryland, Pennsylvania, West Virginia, and Virginia) has a Technical Assistance Center.
- The Region 3 TCTAC is National Wildlife Federation in partnership with:
  - University of Maryland's (UMD) Center for Community Engagement Environmental Justice and Health (CEEJH)
  - Environmental Finance Center (EFC)
  - Morgan State University
  - West Virginia State University
  - Centro De Apoyo Familiar
  - South Baltimore Community Land Trust
  - Overbrook Education Center
  - Sussex Health & Environmental Network/Sentinels of Eastern Shore Health
  - Empower DC



---

## EPA Thriving Communities Program

- The Region 3 TCTAC Center was awarded \$12 Million to provide technical assistance throughout the region. <https://blog.nwf.org/2023/12/the-12-million-epa-region-3-thriving-communities-technical-assistance-grant-award/>
- The Region 3 TCTAC has four primary objectives:
  1. Outreach and Engagement to underserved, overburdened, rural, and capacity constrained communities to receive technical assistance.
  2. Capacity-building for environmental and energy justice assessment.
  3. Capacity-building and direct assistance in grant writing techniques and financing.
  4. Capacity-Building and direct assistance in engaging policy-makers, government, business, and industry in decision-making to address environmental and energy injustices.
- Region 3 Resource line (202-792-5350) for use by organizations or entities interested in providing pro bono services to communities.



---

## EPA Thriving Communities Grantmaker Program

- Region 3 Grantmaker is GHHI in partnership with:
  - Latin American Community Center (Wilmington, DE)
  - Childrens National Research Institute (Washington, DC)
  - Black Millennials 4 Flint (Washington, DC)
  - BlocPower (Brooklyn, NY)
  - Chesapeake Bay Foundation (Annapolis, MD)
  - Children's National Hospital Washington, DC)
  - Chisolm Legacy Project (Baltimore, MD)
  - Coalition for Green Capital (Washington, DC)
  - Delaware State University (Dover, DE)
  - Howard University (Washington, DC)
  - Invest Appalachia (Ashville, NC)
  - JustFund (Oakland, CA)
  - NAACP Maryland (Columbia, MD)
  - New Ecology (Boston, MA)
  - Savannah Barber (Tribal lands, VA)
  - United Parents Against Lead (Richmond, VA)
  - Women for a Healthy Environment (Pittsburgh, PA)

---

## EPA Thriving Communities Grantmaker Program

- GHHI and partners will be releasing an RFP and providing subgrants to awardees starting the summer of 2024
- Community-based nonprofit organizations and other eligible organizations seeking subgrant funding will be able to apply for subgrants through three concurrent tiers offered by the Grantmakers.
- Tier One will consist of grants for \$150,000 for assessment,
- Tier Two will consist of grants for \$250,000 for planning, and
- Tier Three will consist of grants for \$350,000 for project development.
- In addition, \$75,000 will be available for capacity-constrained community-based organizations through a noncompetitive process under Tier One.

---

## EPA Thriving Communities Grantmaker Program

- Eligible entities:
  - Nonprofit organizations, community-based and grassroots nonprofit organizations
  - Philanthropic and civic organizations with nonprofit status
  - Tribal governments
  - Local governments
  - Native American Organizations
- Ineligible subrecipients include: Individuals, For profit businesses, State governments

# Questions and Discussion



# Thank You

**Ruth Ann Norton**

President & CEO

[ranorton@ghhi.org](mailto:ranorton@ghhi.org)

**Michael McKnight**

Sr. Vice President of National Programs

[mmcknight@ghhi.org](mailto:mmcknight@ghhi.org)



[www.ghhi.org](http://www.ghhi.org)



[@HealthyHousing](https://twitter.com/HealthyHousing)



[GHHInational](https://www.facebook.com/GHHInational)