

Kenilworth Park Landfill Site

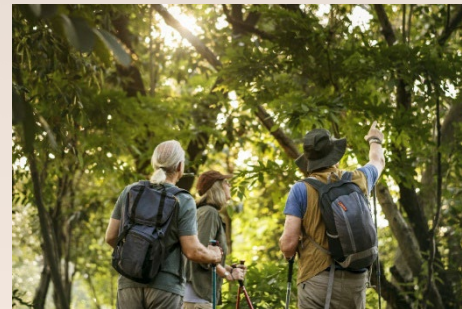


Kenilworth Park Site Risks

Human Health Risk

KPN – “Unacceptable” *long-term* risk if playing sports on fields

KPS – No unacceptable risk to visitors involved in “passive recreational activities” (e.g., walking/biking on trails or bird watching)



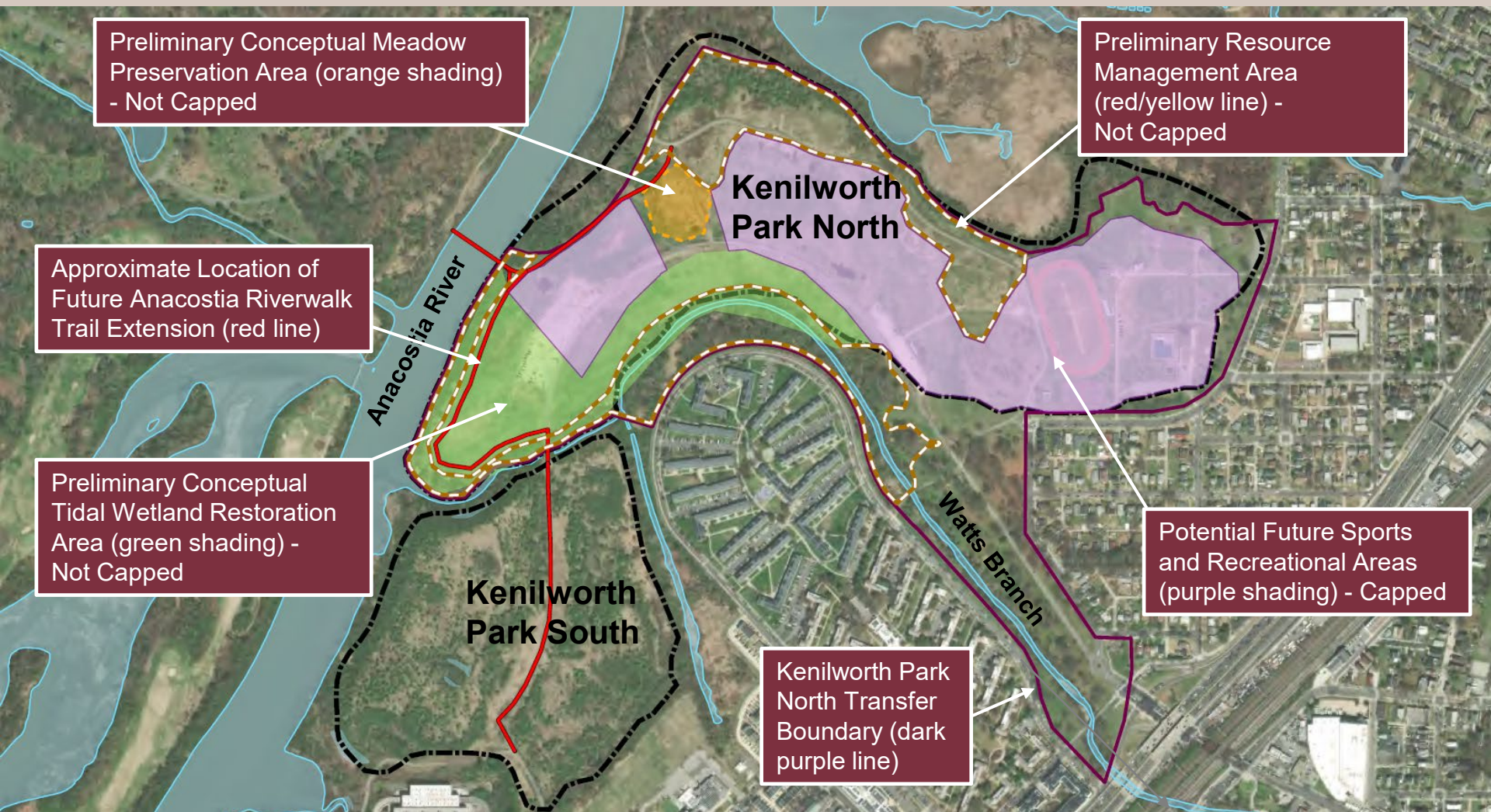
Selected Remedy Description

The Selected Remedy (Clean Up) described in the ROD provides for the following:

- **A 1-foot-thick, clean soil barrier cap** will be placed in areas of Kenilworth Park North that are reserved for organized sports and recreation, community activities, and special events.
- **Institutional controls** will be implemented to maintain the new clean soil barrier and existing engineering controls in good condition, prevent exposure to remaining potential subsurface hazards (i.e., buried waste and landfill gas) that may be encountered during completion of excavation activities, and limit future land use.
- **Long-term monitoring** for potential erosion to confirm the landfill cover material is maintaining a barrier that prevents potential exposure to buried waste.
- This remedy is consistent with the intended future land uses of Kenilworth Park North and Kenilworth Park South.



Preliminary Conceptual Land Use Plan For Kenilworth Park North



Source: District's Preliminary Land Use Plan, Subject to Change

